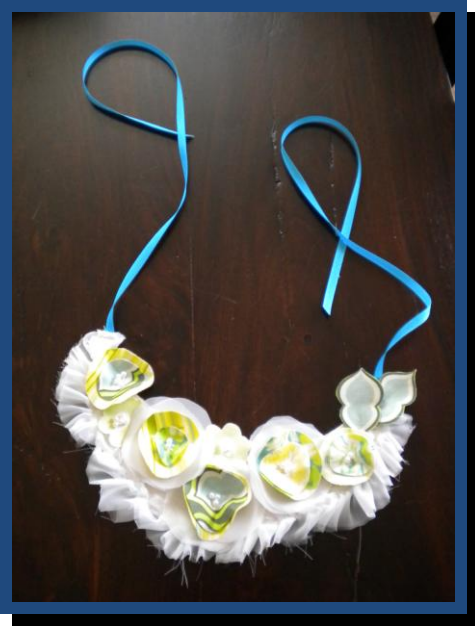


## Bib Necklace

Designed by Shannon Dennis of [www.theninaline.com](http://www.theninaline.com)



### Supplies:

1/4 yard of nude colored cotton fabric  
1/4 yard of 3-5 coordinating cotton prints  
1/4 yard of white chiffon  
1 yard of 5/8" wide Wrights® satin ribbon  
Pearls and/or crystals for the center of the flowers  
1 yard Steam-A-Seam II Lite  
1/4 yard Sulky® Cut Away Plus®  
Fabric glue  
1 spool of Coats & Clark® Dual Duty® white thread  
Scissors

### Prepare & Cut:

- From your nude cotton cut 2 bib templates for your necklace base
- From your white chiffon cut 1 strip 1 1/2" wide by the width of the fabric
- Cut your remaining chiffon into 10 circles 3" wide
- From the Sulky® Cut Away Plus® cut 1 bib template
- Cut the 1 yard of satin ribbon in half so you have two pieces 18" long

- Cut each of the coordinating cotton fabrics into two pieces that are 9" x 20". Following the manufacturer's instructions, fuse the two fabrics together with the Steam-A-Seam II Lite®.
- Cut the fused cotton fabrics into the following sized circles:
  - 5 – 2 1/2" wide
  - 10 – 1" wide
  - 5 – 3/4" wide
  - 5 – 1/2" wide

### Instructions:

1. Place the Sulky Cut Away Plus® to the wrong side of one of your bib necklace bases. Place the two nude bases wrong side together with the stabilizer sandwiched between and match all the raw edges. Using a zigzag stitch, stitch around the base.
2. Fold one end of the satin ribbon over 1/4" then over 1/4" again. Use a straight stitch to sew in place at the top of the bib necklace. Repeat for the other ribbon on the other side of the base.
3. Lengthen your straight stitch to a 4.0 stitch length. Sew along one long end of the 1 1/2" chiffon strip making sure to leave a "tail" of thread at the beginning and end. Gently pull the bobbin thread and gather the chiffon until it is the length needed to go around the bottom of your bib necklace.
4. Return your straight stitch to the default length on your machine and stitch the chiffon in place. Remove the gathering stitches.
5. Layer your fused circles and chiffon in any combination of fabrics. You will need the following to fill your bib:
  - a. 5 combinations with 3" chiffon base, 2 1/2" fused cotton base, 1" middle and 3/4" top
  - b. 5 combinations with 1" base and 1/2" top
6. Arrange the combinations on your bib necklace. Set your machine for a zigzag stitch and drop your feed teeth/dogs on your machine. Tack the circles in place through all layers of fabric.
7. Using fabric glue, place pearls and crystals in the center of the flowers, on top of the tacking, as desired. To give your flowers some texture and 3D appearance, gently steam the flowers and reheat the Steam-A-Seam®. Mold as desired.